

Address: NO.6W.Liangda Road, Sanzhou Lunjiao Street, Shunde District, Foshan City, Guangdong Province, China.

Mobile Phone: +8613924551532 (Whatsapp)

Website: [www.gtm-machine.com](http://www.gtm-machine.com)

E-mail: [elainepenn@126.com](mailto:elainepenn@126.com) / [elaine@gtmmachine.com](mailto:elaine@gtmmachine.com)

## GPS15/20/25 Glass Automatic Sandblasting Machine



## GPS15/GPS20/GPS25

### 1. General Description:

- 1.1 GPS15/20/25 has full-automatic and manual functions, equipped with 3 automatically guns and 1 manual gun;
- 1.2 The nozzles of guns are made of a special material which can increase using life.
- 1.3 Gun transfer, glass input, and glass output conveyor adopt timing belt which can improve transmission precision.
- 1.4 The lifting device of blasting guns is set outside the machine to ensure safety performance and sandblasting speed.

### 2. Technical Parameter:

Model:	GPS15	GPS20	GPS25
Min.processing size:	300*300mm	300*300mm	300*300mm
Max.processing size:	1500*3000mm	2000*3000mm	2500*3000mm
Height of processing:	1500mm	2000mm	2500mm
Processing Speed:(Use green carborundum)	12 m <sup>2</sup> -15 m <sup>2</sup> /H	12 m <sup>2</sup> -15 m <sup>2</sup> /H	12 m <sup>2</sup> -15 m <sup>2</sup> /H
Height of conveyor:	550mm	550mm	550mm
Air pressure:	0.6~0.8Mpa	0.6~0.8Mpa	0.6~0.8Mpa
Air output:	5m <sup>3</sup> /min	5m <sup>3</sup> /min	5m <sup>3</sup> /min
Air source of the exterior: 1m <sup>3</sup> gas storage and purifying equipment for compressed air are needed.			
Weight:	1000KG	1100KG	1200KG
Power:	3.5KW	3.5KW	3.5KW
Size:	4800×1500×2300mm	7400×1500×2780mm	7400×1500×3300mm



# GTM GLASS MACHINERY CO., LTD.

Address: NO.6W.Liangda Road, Sanzhou Lunjiao Street, Shunde District, Foshan City, Guangdong Province, China.

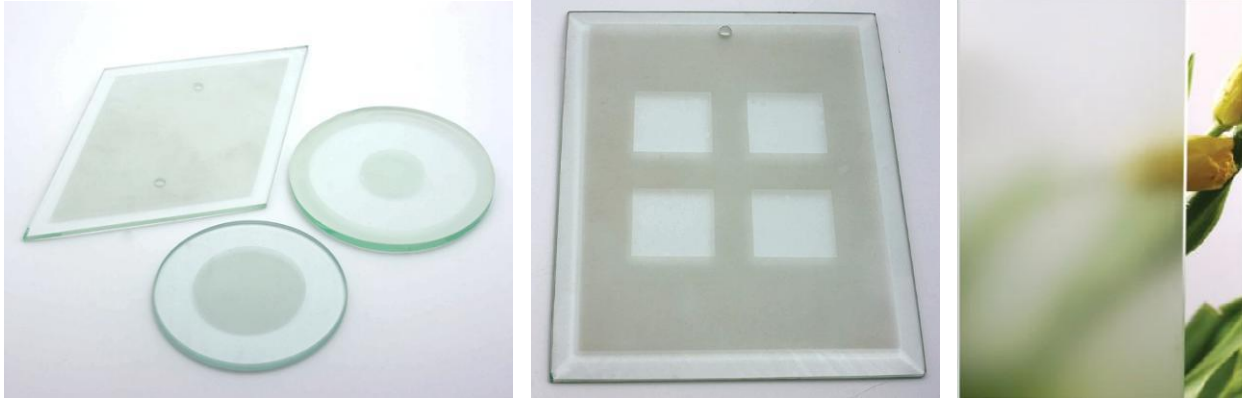
Mobile Phone: +8613924551532 (Whatsapp)

Website: [www.gtm-machine.com](http://www.gtm-machine.com)

E-mail: [elainepenn@126.com](mailto:elainepenn@126.com) / [elaine@gtmmachine.com](mailto:elaine@gtmmachine.com)

---

## 3. Glass Samples:



## 4. Detail Pictures:





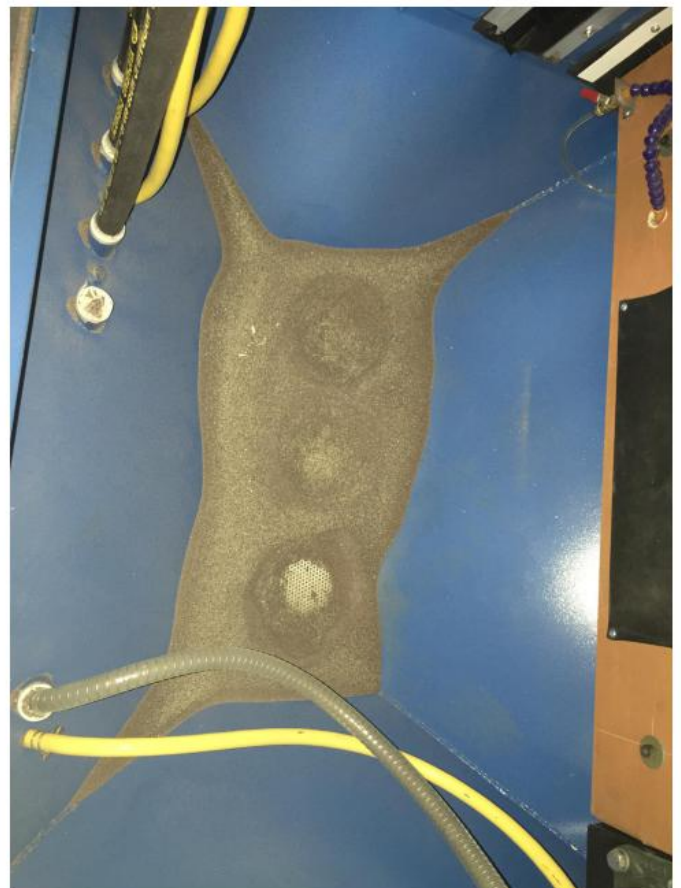
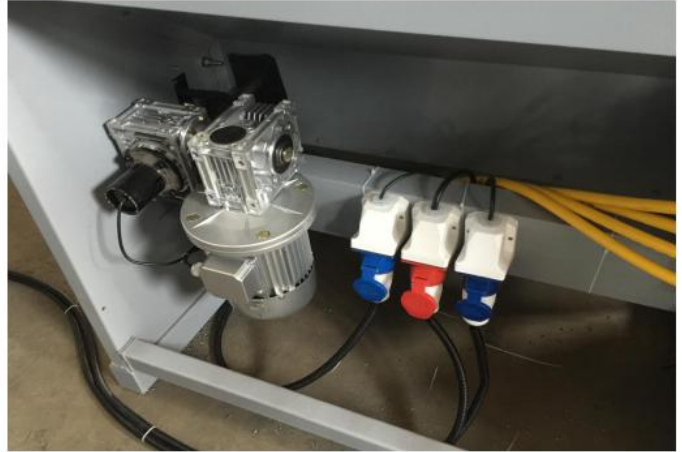
# GTM GLASS MACHINERY CO., LTD.

Address: NO.6W.Liangda Road, Sanzhou Lunjiao Street, Shunde District, Foshan City, Guangdong Province, China.

Mobile Phone: +8613924551532 (Whatsapp)

Website: [www.gtm-machine.com](http://www.gtm-machine.com)

E-mail: [elainepenn@126.com](mailto:elainepenn@126.com) / [elaine@gtmmachine.com](mailto:elaine@gtmmachine.com)





# GTM GLASS MACHINERY CO., LTD.

Address: NO.6W.Liangda Road, Sanzhou Lunjiao Street, Shunde District, Foshan City, Guangdong Province, China.

Mobile Phone: +8613924551532 (Whatsapp)

Website: [www.gtm-machine.com](http://www.gtm-machine.com)

E-mail: [elainepenn@126.com](mailto:elainepenn@126.com) / [elaine@gtmmachine.com](mailto:elaine@gtmmachine.com)





# GTM GLASS MACHINERY CO., LTD.

Address: NO.6W.Liangda Road, Sanzhou Lunjiao Street, Shunde District, Foshan City, Guangdong Province, China.

Mobile Phone: +8613924551532 (Whatsapp)

Website: [www.gtm-machine.com](http://www.gtm-machine.com)

E-mail: [elainepenn@126.com](mailto:elainepenn@126.com) / [elaine@gtmmachine.com](mailto:elaine@gtmmachine.com)

